



# *Building Our Future Legacy*

A Capital Campaign for St. Clare Catholic School



# Our Story

Archbishop Coleman F. Carroll created the parish of St. Clare in April of 1960. In August of 1961 Fr. John W. Schlinkmann was appointed pastor and plans were made for the construction of a building that would house the church and proposed school. The building was completed in 1964. The upper floor of the building was designated for classrooms, while the lower level provided room for a temporary church. St. Clare Catholic School opened in August of 1964 under the direction of the Sisters of St. Joseph of St. Augustine.



- 1969** The present St. Clare Church was completed, and the building that served as both church and school then became used solely as a school.
- 1971** The Sisters of St. Joseph withdrew the community of nuns from the school.
- 1977** The present parish hall was completed and is still being used today as the school lunchroom.
- 1985** Kindergarten students were enrolled for the first time.
- 1987** The Father Bonaventure Library was built.
- 1989** A building on campus was renovated and the Kindergarten classrooms were relocated.
- 2004** Hurricanes Francis and Jeanne significantly damaged both the school and the parish hall, forcing classes to be scattered across three locations within Palm Beach County while repairs were made to both buildings.
- 2014** PreK-4 students were enrolled for the first time and the Kindergarten classrooms were relocated back to the main building.
- 2016** A PreK-3 class was added.
- 2017** Security improvements were made including a fence and security cameras.
- 2018** The existing playgrounds were renovated.
- 2023** Two portable classrooms were added to handle the increased enrollment.
- 2024** Restrooms and hallway floors in the main building were remodeled. The existing library was reconfigured to create a space for fine arts.

Sixty years later, St. Clare Catholic School retains the feeling of a close knit family, proudly serving 439 students and their families. This community models and teaches Catholic morals and values, while creating a caring, respectful environment which promotes academic excellence and fosters a love for learning. Our campus, while expansive, is long overdue and can be designed to better meet the needs of the students and families we serve now and in the future. The main school building requires updating to function as a safe space for quality learning. The students in our PreK classrooms are disconnected from the academic synergy from the rest of the student body and would greatly benefit from being located closer to the main school and all of the learning resources available within. St. Clare's 13 sports teams are currently unable to practice nor host home games on campus due to the lack of facilities even though we have the undeveloped acreage available. To accomplish this vision, we need the help of unwavering partners who, like us, believe in making sure our students are prepared for a lifetime of learning and service to God.



# Our Why

## *Our Mission*

At St. Clare Catholic School with the Grace of the Blessed Virgin Mary, we are one family of Faith living the sacraments and serving through works of mercy, here to learn, here to lead, and here to love as Jesus loves.

## *Our Vision*

St. Clare Catholic School will provide diversified instruction and rigorous academics enhanced by 21st century skills of innovation, critical thinking, collaboration, and technology. Catholic values, truth, and morality will be the foundation for leadership and success in our world today.



*One Family of Faith*

# Current Needs and Challenges

## Aged and Deteriorating Windows

Our school building, now 60 years old, still has its original jalousie windows. The current windows do not effectively block out noise or maintain consistent indoor temperatures, impacting both teaching and learning. They also do not provide adequate protection against severe weather conditions and are a security concern in an emergency situation.

## Inefficient Early Learning Center

Our ELC requires improvements to create a safer, more secure, and well-defined learning environment due to its inefficient layout. The original space has been divided into four classrooms, each needing clearer structure and organization. Relocating the ELC closer to the main school will enhance the flow of the school day, improving accessibility and connectivity.

## Inadequate Athletic Fields

We do not have a home athletic field for our boys and girls soccer teams or flag football teams. They currently have to rent field space off campus and travel for our games.

## Endowment

Our school's long-term success depends on a stronger financial foundation, but our current endowment is not large enough to fully support our future needs. Expanding our endowment will provide the stability needed to uphold our mission for generations to come.





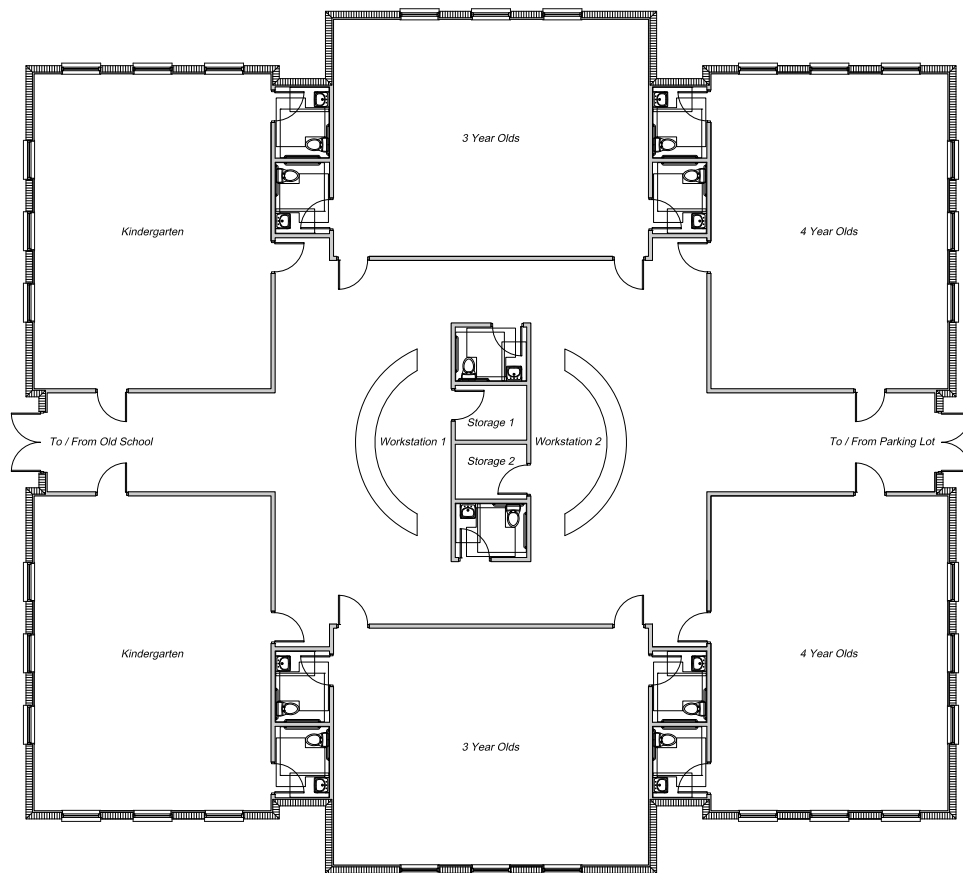
## Priority 1

# Modernize Windows in the Main School Building

**\$1,500,000**

In 2004 the main school building sustained heavy damage from Hurricane Frances and Hurricane Jeanne. The roof was blown off of the building. The windows caused significant water damage to the interior of the building as well. While the roof was replaced, the windows continue to be a source of water damage when storms occur. Replacing the windows in the main school building will provide the following benefits:

- **Energy Efficiency:** Improved insulation to reduce heating and cooling costs.
- **Security & Safety:** Enhanced protection with modern, secure window designs.
- **Sustainability:** Use of sustainable materials to minimize environmental impact.
- **Aesthetics:** Upgraded windows to enhance the visual appeal of the school building.
- **Hurricane Protection:** Strengthened windows to withstand severe weather conditions and ensure the safety of our students and staff.



## Priority 2

# Construct an Early Learning Center

**\$3,000,000**

The location of our Pre-K classrooms is at the front of the campus which is separated from the main building. This distance from the main school building causes challenges for our youngest learners to be fully immersed in the academic experience. Additionally, the two Kindergarten classes are located in the portable classrooms which are intended to be temporary structures. When our school was constructed, Kindergarten and Pre-K were not offered; therefore, the building wasn't designed with them in mind. An early learning center would bring these two groups together in a purposefully designed center fostering a consistent, cohesive, and nurturing environment for our youngest learners.

- **Greater Connectivity:** Moving our early childhood classrooms closer to the main school building and related academic resources builds a stronger connection between these learners and the rest of the school community
- **Enhanced Security:** With all students located near the main school building and out of temporary classrooms, we can create a more secure environment
- **Minimized Distractions:** The facility will be designed specifically for our young learners reducing conditions that could negatively impact learning
- **Seamless Transitions:** Housing both PreKindergarten and Kindergarten within the same center creates a seamless transition for our young learners maintaining a clear and sustained academic focus



### Priority 3

## Establish Athletic Fields

**\$500,000**

Athletics are an integral part of St. Clare's culture. Currently, our field is unusable for practices or games because the ground is unsuitable for safe play. While we have an outdoor basketball court, it cannot be used for official basketball games. Our 13 sports teams practices and games are held off campus at an additional cost to our student athletes and the school. Presently, P.E. classes create a makeshift field marked with cones to designate the playable area. Enhancements to our existing property will provide a top-tier experience for all students and especially for those who participate in or attend our athletic events, reflecting the historical excellence of St. Clare's athletic programs.

Our St. Clare campus has undeveloped property that is not clearly defined for athletic purposes. We have enough acreage to establish a full size field that could be used for multiple sports. In addition, we can create a practice field for our teams as well as a place to hold outdoor P.E. classes.



## Priority 4

# Endowment

**\$500,000**

A strong endowment provides long-term financial stability for our school by generating a steady income stream to support tuition assistance, faculty development, faith formation, and program enhancements. It helps reduce reliance on tuition and annual fundraising, ensuring the school can maintain its mission, attract top educators, and invest in campus improvements. By sustaining scholarships and key programs, our endowment strengthens the school's ability to serve diverse families while securing its future for generations to come.

# Summary of Campaign Priorities

Modernization of Windows in Main Building	\$1,500,000
Construct an Early Learning Center	\$3,000,000
Establish Athletic Fields	\$500,000
Endowment	\$500,000
<b>ESTIMATED TOTAL</b>	<b>\$5,500,000</b>



## *How We Will Get There*

### Accumulated Savings, Reserves and Past Long-term Support

Through the generosity of long-term supporters and careful management and budgeting, St. Clare can begin these efforts with a significant head-start. These carefully stewarded resources will allow us to begin addressing our priorities.

### Building Our Future Legacy Campaign Support

St. Clare envisions a comprehensive campaign that connects with all of those who believe in St. Clare, garnering lead-gift, major-gift and annual giving increases from all segments of the St. Clare community.



## *Campaign Prayer*

Heavenly Father,

We thank you for your blessings upon your St. Clare family. Guide our efforts through our capital campaign, “Building Our Future Legacy”. Give us the courage to live as St. Clare said, “Love God, serve God; everything is in that” for we humbly desire to be your faithful stewards.

Bless those who give, those who plan, those who pray for, and those who carry out this effort. May our sacrifices today provide a lasting foundation for generations to learn, grow, and live out their Catholic faith. May all we do glorify you.

We ask this through Christ, our Lord. Amen.



821 Prosperity Farms Road  
North Palm Beach, Florida 33408  
P: (561) 622-7171

[www.stclareschool.com](http://www.stclareschool.com)

